

TAKU

spirella®

since 1958

ZINC | STAINLESS STEEL | CHROMED | GLASS

▪ Pulverbeschichtet / Powder-coated / Thermolaqué



CHROMED



TO DRILL

Ø 6 mm



TO SCREW

OR



TO STICK



ADHESIVE AGENT

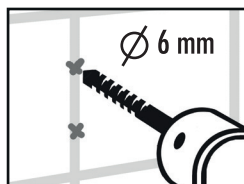
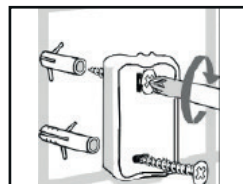
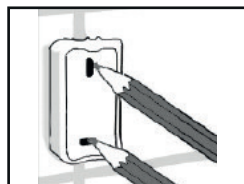


10.12566 PATTEX
Klebknete separat erhältlich
Pâte à coller disponible séparément
Pasta adesiva ottenibile separatamente
Adhesive is separately available

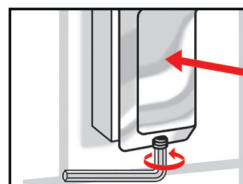
screws included

optional

TO FIX



Ø 6 mm



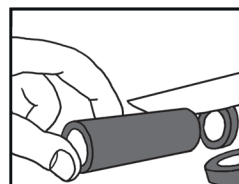
Schrauben inkl.
Vis incl.
Viti incl.
Screws incl.

TO STICK

clean + fat free



einfüllen fill in



kneten to knead



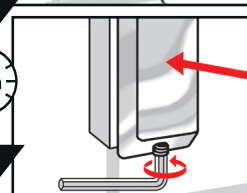
press!



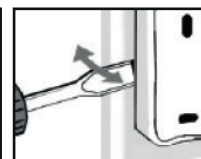
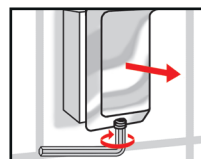
3 min.



24h



Demontieren / Démontér / Smontarar / Remove :



Don't use strong chemicals